




Mini High Speed Dome Quick Setup Guide

NO:101-500-0272-02
Issue:1.2

Precautions

Fully understand this document before using this device, and strictly observe rules in this document when using this device. If you install this device in public places, provide the tip "You have entered the area of electronic surveillance" in an eye-catching place. Failure to correctly use electrical products may cause fire and severe injuries.

 WARNING	It alerts you to moderate dangers which, if not avoided, may cause minor or moderate injuries.
 CAUTION	It alerts you to risks. Neglect of these risks may cause device damage, data loss, device performance deterioration, or unpredictable results.
 NOTE	It provides additional information.

WARNING

- Strictly observe installation requirements when installing the device. The manufacturer shall not be held responsible for device damage caused by users' non-conformance to these requirements.
- Strictly conform to local electrical safety standards and use power adapters that are marked with the LPS standard when installing and using this device. Otherwise, this device may be damaged.
- Use accessories delivered with this device. The voltage must meet input voltage requirements for this device.
- If this device is installed in places with unsteady voltage, ground this device to discharge high energy such as electrical surges in order to prevent the power supply from burning out.
- When this device is in use, ensure that no water or any liquid flows into the device. If water or liquid unexpectedly flows into the device, immediately power off the device and disconnect all cables (such as power cables and network cables) from this device.
- Do not focus strong light (such as lighted bulbs or sunlight) on

this device. Otherwise, the service life of the image sensor may be shortened.

- If this device is installed in places where thunder and lightning frequently occur, ground the device nearby to discharge high energy such as thunder strikes in order to prevent device damage.

CAUTION

- Avoid heavy loads, intensive shakes, and soaking to prevent damages during transportation and storage. The warranty does not cover any device damage that is caused during secondary packaging and transportation after the original packaging is taken apart.
- Protect this device from fall-down and intensive strikes, keep the device away from magnetic field interference, and do not install the device in places with shaking surfaces or under shocks.
- Clean the device with a soft dry cloth. For stubborn dirt, dip the cloth into slight neutral cleanser, gently wipe the dirt with the cloth, and then dry the device.
- Do not jam the ventilation opening. Follow the installation instructions provided in this document when installing the device.
- Keep the device away from heat sources such as radiators, electric heaters, or other heat equipment.
- Keep the device away from moist, dusty, extremely hot or cold places, or places with strong electric radiation.
- If the device is installed outdoors, take insect- and moisture-proof measures to avoid circuit board corrosion that can affect monitoring.
- Remove the power plug if the device is idle for a long time.
- Before unpacking, check whether the fragile sticker is damaged. If the fragile sticker is damaged, contact customer services or sales personnel. The manufacturer shall not be held responsible for any artificial damage of the fragile sticker.

Special Announcement

- All complete products sold by the manufacturer are delivered along with nameplates, quick setup guide and accessories after strict inspection. The manufacturer shall not be held responsible for counterfeit products.
- The manufacturer will update this manual according to product function enhancement or changes and regularly update the software and hardware described in this manual. Update information will be added to new versions of this manual without prior notice.
- This manual may contain misprints, technology information that is not accurate enough, or product function and operation description that is slightly inconsistent with the actual product, the final interpretation of company is as a standard.
- This manual is only for reference and does not ensure that the information is totally consistent with the actual product. For consistency, see the actual product.

NOTE

For more information, please refer to website.

1 Packing List

Open the package, check the appearance of product for no obvious damage, and confirm the item list for table 1-1 is consistent.

Table 1-1 Packing list

Component	Quantity	Remark
Mini high speed dome camera	1	
Quick setup guide	1	
Power adapter	1	
Ceiling panel	1	
Ceiling screw CM4*7MM	3	
Self-tapping screw PM4*30MM	3	
Plastic anchor	3	
Wall mounting bracket	1	Applied for wall mounting bracket, it is optional
Mounting bracket connector	1	
Mounting screw PM4*10MM	3	
Mounting screw PM4*8MM	3	
Self-driver screw PM4*30MM	4	
Plastic anchor	4	

2 Device Structure

2.1 Device Ports

NOTE

Different device may have different multi-head cable; Please refer to the actual product.

Figure 2-1 Multi-head cable

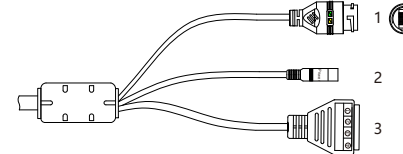


Table 2-1 Multi-head cable description

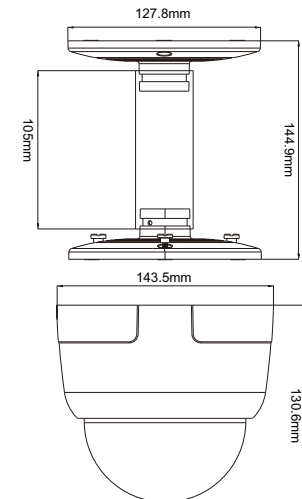
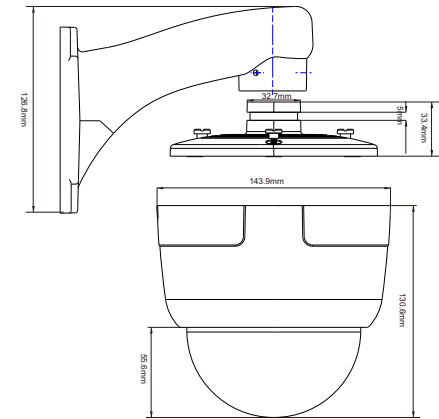
ID	Core	Description
1	Network interface	Connects to a standard Ethernet cable
2	Power supply	DC12V
3	Alarm	1Alarm in;2Alarm in COM ; 3Alarm out; 4Alarm out COM

2.2 Camera Dimensions

NOTE

Different device may have different dimensions; Please refer to the actual product.

Figure 2-2 Dimensions (Unit: mm)



3 Device Installation

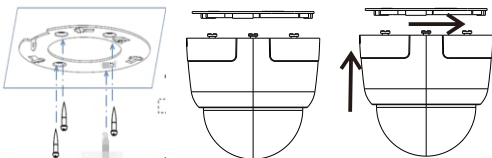
NOTE

Install the camera in a location that can support the weight of the camera and bracket.

3.1 Ceiling Installation :

- Step 1 Take out the black plastic mount plate, mark the holes, drill the 3 holes. Use 3pcs M4*30mm plastic anchors to fix the mount plate.
- Step 2 Put 3 pcs cross head screws into the bottom of camera case.
- Step 3 Connect camera to the mount plate, then fasten it by anticlockwise.

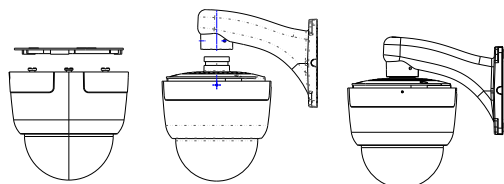
Figure 3-1 Ceiling installation



3.2 Wall Installation :

- Step 1 Take out the wall bracket, mark the holes, drilling 4 holes. Use 4pcs M4*30mm plastic anchors to fix the bracket.
- Step 2 Fasten the round plate and the camera with 3 pcs M4*9mm screws.
- Step 3 Connect the wall bracket and round plate with 3 pcs M5*8mm screws.

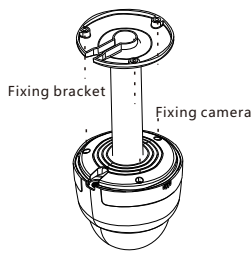
Figure 3-2 Wall installation



3.3 Pendant Installation :

- Step 1 Take out the pendant pipe and round plate, mark the holes, drilling 3 holes. Use 3pcs M4*30mm plastic anchors to fix the round plate, then connect the pendant pipe with 3 pcs M4*9mm screws
- Step 2 Connect the other round plate with the camera by using 3 pcs M4*9mm screws.
- Step 3 Connect the other end of pendant pipe to round plate(close to the camera) with 3 pcs M4*8mm screws.

Figure 3-3 Pendant Installation



4 Quick Configuration(e.g Edge)

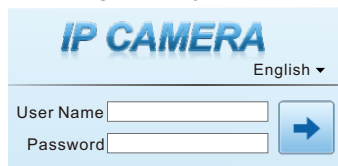
4.1 Login

- Step 1 Open the **Microsoft Edge** browser(switch to IE mode), enter the IP address of IP camera (default value: 192.168.0.120) in the box, and press Enter. The login page is displayed as shown in figure 4-1 .
- Step 2 Input the user name and password.

NOTE

- Access the web at Microsoft Edge browser where the mode should switch to **Reload in Internet Explorer mode**. At browser "Setting > Default browser" page, **Let Internet Explorer open sites in Microsoft Edge** choose "Always (Recommended)"; **Allow sites to be reloaded in Internet Explorer mode (IE mode)** choose "Allow".
- The default user name is admin. The default password is admin. Change the password when you log in the system for first time to ensure system security.
- It is advised to restart the device three minutes later after modifying password
- You can change the system display language on the login page.

Figure 4-1 Login



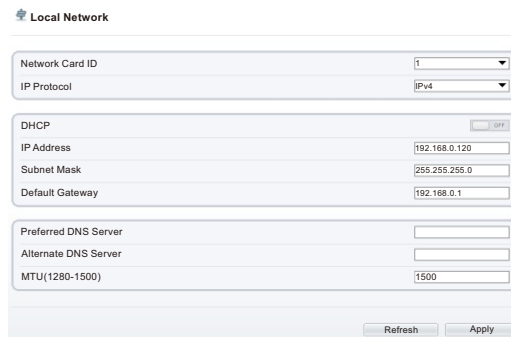
Step3 Click Login, the main page is displayed.

4.2 Modify IP address

Choose **Configuration > Device > Local Network**, the **Local Network** page is displayed. Enter the IP address in the IP Address box and click **Apply** as shown in figure 4-2.

After the IP address is set successfully, please use the new IP address to log in the Web interface.

Figure 4-2 Local Network



4.3 Browsing Video

To ensure the real-time video can be played properly, you must perform the following steps when you log in the web for the first time: If you can view the video directly, please ignore the following steps.

- Step 1 Open Microsoft Edge, Choose **Tools > Internet options > Security > Trusted sites > Sites**, in the display dialog box, click **Add**, as shown in figure 4-3.
- Step 2 In Microsoft Edge, choose **Tool > Internet Options > Security > Customer level**, and set **Download unsigned ActiveX control** and **initialize and script ActiveX controls not marked as safe for scripting under ActiveX controls and plug-ins** to **Enable**, as shown in figure 4-4.

Figure 4-3 Adding a trusted site

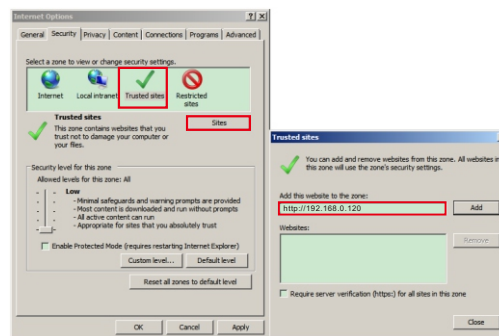
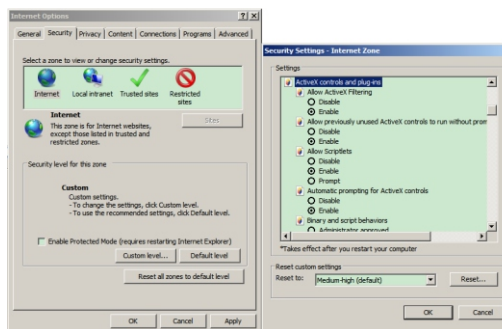


Figure 4-4 Configuring ActiveX control and plug-in



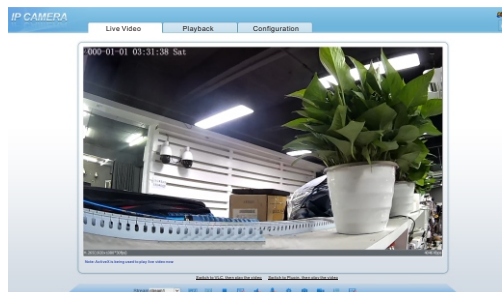
Step 3 Download and install the player plug-in properly.

NOTE

If the repair tips pop up when installing the plug-in, please ignore the tips, and continue the installation, the login page will be displayed when the plug-in is ready.

Click "Live Video" to check the real-time video, as shown in figure 4-5.

Figure 4-5 Live Video



4.4 Two-way audio

NOTE

Some models do not support two-way audio, so this section is not applicable.

4.4.1 Camera ↔ PC

Connection:

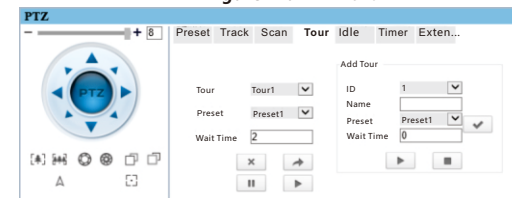
- Step 1 Connect microphone to audio-in interface of camera.
- Step 2 Connect speaker to the PC audio output interface.
- Step 3 Log in camera Web, click to turn on two-way audio.

4.4.2 PC ↔ Camera

- Step 1 Connect microphone to PC audio input interface.
- Step 2 Connect speaker to camera audio out interface.
- Step 3 Log in camera Web, click to turn on two-way audio.

4.5 PTZ Setting

Figure 4-6 PTZ menu



You can adjust the position, zoom, iris, focus, and other parameters of the high-speed dome, such as set **preset position, track, scan, tour, timer, and extension** through the PTZ menu.

Speed bar: Adjust the rotation speed of the high-speed dome. If the camera rotates at the 1x zoom, the rotation speed is the fastest, the more times it zooms, the lower the rotation speed is. **PTZ keyboard:** Click keyboard directly to adjust the position of the high-speed dome. When 3D is turned on, users can directly adjust the position of the high-speed dome with the mouse on the live video interface.

Click the direction arrow to control the rotation direction of the high-speed dome.

Zoom in / Zoom out.

Iris + / Iris -.

Near Focus / Far Focus.

North, Set north direction, north is the compass function, define true north direction as the reference point for high-speed dome's rotation.

Click to activate the auto focus function.

4.6 Alarm Configuration

NOTE

Partial cameras do not support alarm, this section is not applicable.

Alarm input and Alarm output connection:

- Step 1 Connect alarm input device to Alarm IN0 and Alarm COM0 of multi-head cable.
- Step 2 Connect alarm output device to Alarm OUT1 and Alarm COM1 of multi-head cable, alarm output interface can connect to normal open device only.
- Step 3 Log in Web, Choose **Configuration > Alarm > Alarm output**, set the parameters as shown in figure 4-7.
- Step 4 Choose **Configuration > Alarm > I/O Alarm Linkage**, enable the I/O Alarm and set the parameters of Schedule Setting.

Figure 4-7Alarm

