

STARLIGHT

Network Modules



Key Features

Deep Learning Algorithms



Face



Human

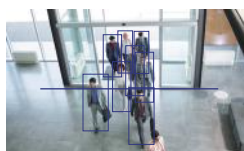


Vehicle



Smoke & Fire

People Counting



People Counting

Behavior Analysis



Intrusion



Single Line Crossing



Double Line Crossing



Loitering



Wrong-way



Illegal Parking

Compatibility



Products

Ultra Starlight

40X SN-PMD2081DN-Z40	37X SN-PMD2041DN-Z37
	
<ul style="list-style-type: none"> • 8 MP (3840 × 2160) @ 25/30 fps • 1/1.8" Sony STARVIS™ II CMOS • 40x optical, 16x digital • 6.8 mm to 272 mm Face/Human/Vehicle/Fire&Smoke • Gyroscope anti-shake • Audio 1 in/out, alarm 1 in/out, RS485, CVBS, wiper, SD card slot 	<ul style="list-style-type: none"> • 4 MP (2592 × 1520) @ 25/30 fps • 1/1.8" Sony STARVIS™ CMOS • 37x optical, 16x digital • 6.8 mm to 251mm • Face/Human/Vehicle/Fire&Smoke • Gyroscope anti-shake • Audio 1 in/out, alarm 1 in/out, RS485, CVBS, wiper, SD card slot • 126.1 x 56.8 x 66.35 mm • 138.2 x 56.8 x 66.35 mm (including tailboard)

Starlight

40X SN-PMD2053DN-Z40	30X SN-PMD2050DN-Z30	25X SN-PMD2020DN-Z25	15X SN-PMD2052DN-Z15
			
<ul style="list-style-type: none"> • 5MP (2592 × 1944) @ 25/30 fps • 1/2.8" Sony STARVIS™ II CMOS • 40x optical, 16x digital • 4.98 mm to 199.3 mm • Face/Human/Vehicle/Fire&Smoke • Optical Defog • Gyroscope anti-shake • Audio 1 in/out, alarm 1 in/out, RS485, SD card slot • 131.04 x 67.6 x 70.5 mm 145.14 x 67.6 x 70.5 mm (including tailboard) 	<ul style="list-style-type: none"> • 5MP (2592 × 1944) @ 25/30 fps • 1/2.8" Sony STARVIS™ CMOS • 30x optical, 16x digital • 5.3 mm to 159 mm • Face/Human/Vehicle/Fire&Smoke • Audio 1 in/out, alarm 1 in/out, RS485, SD card slot • 97.9 x 47.9 x 55.7 mm 112.7 x 47.9 x 59.86 mm (including tailboard) 	<ul style="list-style-type: none"> • 2MP(1920×1080) @ 25/30fps • 1/2.8" Sony STARVIS™ CMOS • 25x optical, 16x digital • 5 mm to 125 mm • Face/Human/Vehicle/Fire&Smoke • Audio 1 in/out, alarm 1 in/out, RS485, SD card slot • 97.9 x 47.9 x 55.7 mm 110.8 x 48.1 x 59.86 mm (including tailboard) 	<ul style="list-style-type: none"> • 5MP (2592 × 1944) @ 25/30 fps • 1/2.8" Sony STARVIS™ II CMOS • 15x optical, 16x digital • 5.3 mm to 79.5 mm • Face/Human/Vehicle/Fire&Smoke • Audio 1 in/out, alarm 1 in/out, RS485, CVBS, wiper, SD card slot • 76.76 x 49.08 x 53.5 mm 92.56×49.08×62.76 mm (including tailboard)



Shenzhen Sunell Technology Corporation

22-23F, Building 2, Chongwen Park, Nanshan Zhiyuan (Phase 3), No. 3370 Liuxian Avenue, Nanshan District, Shenzhen 518052

+86(755) 2675 4336

+86(755) 8602 6152

sales@sunellsecurity.com

©2023 Shenzhen Sunell Technology Corporation. All rights reserved.

The specifications and descriptions of products and services contained in this catalogue were correct at the time of publishing. Inner Range reserves the right to change specifications or withdraw products without notice.