








# Products



## Accessories

			
Bullet Bracket	PTZ Bracket	Pole Bracket	Corner Bracket
			
Glands	Flexible Conduit	Junction Box	Washing Tank

## Application Scenarios



Oil Refining Plants



Chemical Plants



Oil & Gas Stations



Flour Mills



Ports



Island



# Explosion-proof Cameras



### Shenzhen Sunell Technology Corporation

22-23F, Building 2, Chongwen Park, Nanshan Zhiyuan (Phase 3), No. 3370 Liuxian Avenue, Nanshan District, Shenzhen 518052

+86(755) 2675 4336 +86(755) 8602 6152 sales@sunellsecurity.com

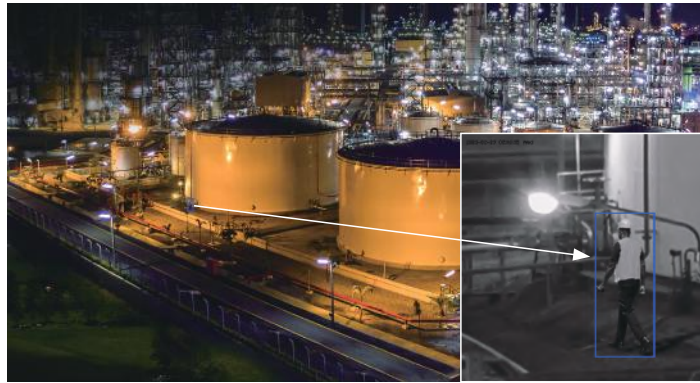
©2023 Shenzhen Sunell Technology Corporation. All rights reserved.

The specifications and descriptions of products and services contained in this catalogue were correct at the time of publishing. Inner Range reserves the right to change specifications or withdraw products without notice.

# Key Features

## High Quality Imaging

- Ultra HD
- Excellent low-light performance



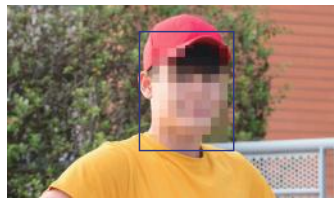
## Intelligent Tracking

- Human/Vehicle
- Auto Tracking; Auto Focus



## Edge AI

- IVS: Intrusion, Single Line Crossing, Double Line Crossing, Loitering, Wrong-way, Illegal Parking
- People counting



Face



Human



Vehicle



Fire/Smoke

## High Protection Level

- 316L Stainless Steel
- IP68



## Dual-certified

- Ex d II C T6 Gb / Ex tD A21 IP68 T80°C W



# Products

Optical			
Bullet		IR Bullet	
	<b>SN-CHP8650CDN</b> <ul style="list-style-type: none"> <li>• 2592×1944 (5MP) @ 25/30fps</li> <li>• 5.3 to 159mm, 30x optical zoom</li> <li>• Human/Vehicle/Fire &amp; Smoke</li> <li>• 100 VAC to 240 VAC</li> <li>• IP68</li> </ul>		<b>SN-CHP8650CDR</b> <ul style="list-style-type: none"> <li>• 2592×1944 (5MP) @ 25/30fps</li> <li>• 5.3 to 159mm, 30x optical zoom</li> <li>• 100m IR (328 ft)</li> <li>• Human/Vehicle/Fire &amp; Smoke</li> <li>• 100 VAC to 240 VAC</li> <li>• IP68</li> </ul>
IR Bullet		PTZ	
	<b>SN-CHP8650EBR</b> <ul style="list-style-type: none"> <li>• 2592×1944 (5MP) @ 25/30fps</li> <li>• 5.3 to 159mm, 30x optical zoom</li> <li>• 200m IR (656 ft)</li> <li>• Human/Vehicle/Fire &amp; Smoke</li> <li>• 100 VAC to 240 VAC</li> <li>• IP68</li> </ul>		<b>SN-IPS8652PCDN</b> <ul style="list-style-type: none"> <li>• 2592×1944 (5MP) @ 25/30fps</li> <li>• 5.3 to 79.5mm, 15x optical zoom</li> <li>• Human/Vehicle/Fire &amp; Smoke</li> <li>• Pan: 360° endless, Tilt: -10° to 90°</li> <li>• 100 VAC to 240 VAC</li> <li>• IP68</li> </ul>
PT		IR PT	
	<b>SN-IPT8650PAN</b> <ul style="list-style-type: none"> <li>• 2592×1944 (5MP) @ 25/30fps</li> <li>• 5.3 to 159mm, 30x optical zoom</li> <li>• Human/Vehicle/Fire &amp; Smoke</li> <li>• Pan: 360° endless, Tilt: -90° to 90°</li> <li>• 100 VAC to 240 VAC</li> <li>• IP68</li> </ul>		<b>SN-IPS8650PAR</b> <ul style="list-style-type: none"> <li>• 2592×1944 (5MP) @ 25/30fps</li> <li>• 5.3 to 159mm, 30x optical zoom</li> <li>• 200m IR (656 ft)</li> <li>• Human/Vehicle/Fire &amp; Smoke</li> <li>• Pan: 360° endless, Tilt: -90° to 90°</li> <li>• 100 VAC to 240 VAC</li> <li>• IP68</li> </ul>
Thermal			
Bullet		Bi-spectrum PT	
	<b>SN-TPH6406DA</b> <b>SN-TPH4203DA</b> <ul style="list-style-type: none"> <li>• 640×512/400×300</li> <li>• Lens: 8/9/15/25/35/50 mm Human/Vehicle/Fire &amp; Smoke</li> <li>• Temp. Pre-alarm &amp; Alarm</li> <li>• Temp. Accuracy: ±2°C / ±2%</li> <li>• IP68</li> </ul>		<b>SN-TPT6436PA</b> <b>SN-TPT4233PA</b> <ul style="list-style-type: none"> <li>• Thermal: 640×512/400×300, Lens: 8/9/15/25/35/50 mm</li> <li>• Optical: 2592×1944 (5MP) @ 25/30fps, 5.3 to 159 mm, 30x</li> <li>• 200m IR (656 ft)</li> <li>• Human/Vehicle/Fire &amp; Smoke/Fire Spot</li> <li>• Temp. Pre-alarm &amp; Alarm</li> <li>• Temp. Accuracy: ±2°C / ±2%</li> <li>• Pan: 360° endless, Tilt: -90° to 90°</li> <li>• IP68</li> </ul>